



SELF  
SERVICE

KARE  
GENERATION



**SIMSIRIKIS**  
CATERING & LAUNDRY EQUIPMENT  
SHIP SUPPLIES

KARE GENERATION:  
IT CARES ABOUT WHAT  
REALLY MATTERS



# kare

GENERATION

# INDEX

WASHERS

06

TUMBLE DRYERS

08

PROFESSIONAL LAUNDRY

10

PAYMENT SOLUTIONS

12

FAGOREMOTE

14

LAUNDRY2GO

16

## WASHERS

## TUMBLE DRYERS



High spin (LA)

Fast spin (LR)

Normal spin (LN)

ADVANCE

CONCEPT

ECONOMIC-LINE

IT CARES ABOUT YOU,  
IT CARES ABOUT  
THE ENVIROMENT



## PROFESSIONAL LAUNDRY

## SYSTEM OF TRANSPORTABLE MODULES



COMPACT  
series

LAUNDRY 2 GO

We present KARE, the new generation of laundry machines by Fagor Industrial. An advanced and complete series of machines designed to provide the best solution for you, because KARE cares about what is most important to you; KARE cares about the world we live in, our environment. In Fagor we care about what really matters.

With the new KARE generation we have made sure that we put all its innovative features to your disposal. The new intelligent control is user friendly and guarantees the ultimate care for your clothes. Our machines have been ergonomically designed and components have been precisely placed for the easiest maintenance. KARE cares about your comfort offering full connectivity so that you can manage your laundry from anywhere.

KARE cares about you and the environment. With a complete and concise set of features that provide an outstanding efficiency in terms of energy and water consumption KARE protects the world we live in.

# WASHERS

The FAGOR INDUSTRIAL washer extractors are specially designed to be used for self-service businesses.

This is available both for soft mount machines LA and rigid machines LR and LN. The machines can be easily transformed from OPL to Self Service from the Touch Plus Control itself.



YOUR BUSINESS IS OUR CONCERN



## A SOLUTION FOR EVERY CUSTOMER

At FAGOR INDUSTRIAL we adapt to each user's needs,  
offering a wide range of options.

### HIGH SPIN | G-FACTOR: 450/350

CONTROL TYPE	HEATING	CAPACITY							
		10-11 kg	13-14 kg	18-20 kg	25-28 kg	35-39 kg	45-50 kg	60-66 kg	120-133 kg
Touch Plus Control (TP2) Self-service	Electric and hot water	LA-11 TP2	LA-14 TP2	LA-18 TP2	LA-25 TP2	LA-35 TP2	-	-	-

### FAST SPIN | G-FACTOR: 300

CONTROL TYPE	HEATING	CAPACITY					NEW
		10-11 kg	13-14 kg	18-20 kg	25-28 kg	25-28 kg	
Touch Plus Control (TP2) Self-service	Electric and hot water	LR-11 TP2	LR-14 TP2	LR-18 TP2	LR-25 TP2	LR-35 TP2	

### NORMAL SPIN | G-FACTOR: 200 (LN-60 G-FACTOR: 150)

CONTROL TYPE	HEATING	CAPACITY					
		10-11 kg	13-14 kg	18-20 kg	25-28 kg	35-39 kg	60-66 kg
Touch Plus Control (TP2) Self-service	Electric and hot water	LN-11 TP2	LN-14 TP2	LN-18 TP2	LN-25 TP2	LN-35 TP2	LN-60 TP2

# TUMBLE DRYERS

ADVANCE, CONCEPT and ECONOMIC LINE models can be acquired in Self-Service versions, keeping the same features as the standard versions.

Therefore, Fagor dryers offer a great versatility as the self-service versions can easily be adapted to different paying options.

ADVANCE

CONCEPT

ECONOMIC-LINE



FAGOR INDUSTRIAL TUMBLE DRYERS BETWEEN MODEL SR 11 AND SR 35 KG ARE SPECIALLY DESIGNED FOR THE SELF-SERVICE SECTOR.

## PRODUCT RANGE

## ADVANCE

CONTROL TYPE	HEATING	CAPACITY							
		11-12 kg	17-18 kg	22-24 kg	26-29 kg	33-37 kg	45-50 kg	60-67 kg	74-83 kg
Touch Plus Control (TP2) SELF SERVICE	Electric -gas- Steam	SR-11 TP2	SR-16 TP2	SR-23 TP2	SR-28 TP2	SR-35 TP2			

## CONCEPT

CONTROL TYPE	HEATING	CAPACITY							
		11-12 kg	17-18 kg	22-24 kg	26-29 kg	33-37 kg	45-50 kg	60-67 kg	74-83 kg
Easy Control (M) SELF SERVICE	Electric -gas- Steam	SR-11 M	SR-16 M	SR-23 M	SR-28 M	SR-35 M			

## ECONOMIC LINE

CONTROL TYPE	HEATING	CAPACITY		
		11-12 kg	17-18 kg	22-24 kg
Easy Control (M) SELF SERVICE	Electric -Gas	SC-11 M	SC-16 M	SC-23 M

## STACK DRYERS | ADVANCE

CONTROL TYPE	HEATING	CAPACITY	
		11-12 kg	17-18 kg
Touch Plus Control (TP2) SELF SERVICE	Electric -Gas	SR-2-11 TP2	SR-2-16 TP2

## STACK DRYERS | CONCEPT

CONTROL TYPE	HEATING	CAPACITY	
		11-12 kg	17-18 kg
Easy Control (M) SELF SERVICE	Electric -Gas	SR-2-11 M	SR-2-16 M

## HEAT PUMP | ADVANCE +

CONTROL TYPE	HEATING	CAPACITY		
		11-12 kg	17-18 kg	22-24 kg
Touch Plus Control (TP2) SELF SERVICE	Heat Pump	SR-11 TP2 HE PLUS	SR-16 TP2 HE PLUS	SR-23 TP2 HE PLUS

## HEAT PUMP | ADVANCE

CONTROL TYPE	HEATING	CAPACITY		
		11-12 kg	17-18 kg	22-24 kg
Touch Plus Control (TP2) SELF SERVICE	Heat Pump	SR-11 TP2 HE	SR-16 TP2 HE	SR-23 TP2 HE

# PROFESSIONAL LAUNDRY

**COMPACT**  
*series*

## MUCH MORE THAN PROFESSIONAL LAUNDRY.

A NEW CONCEPT OF LAUNDRY.

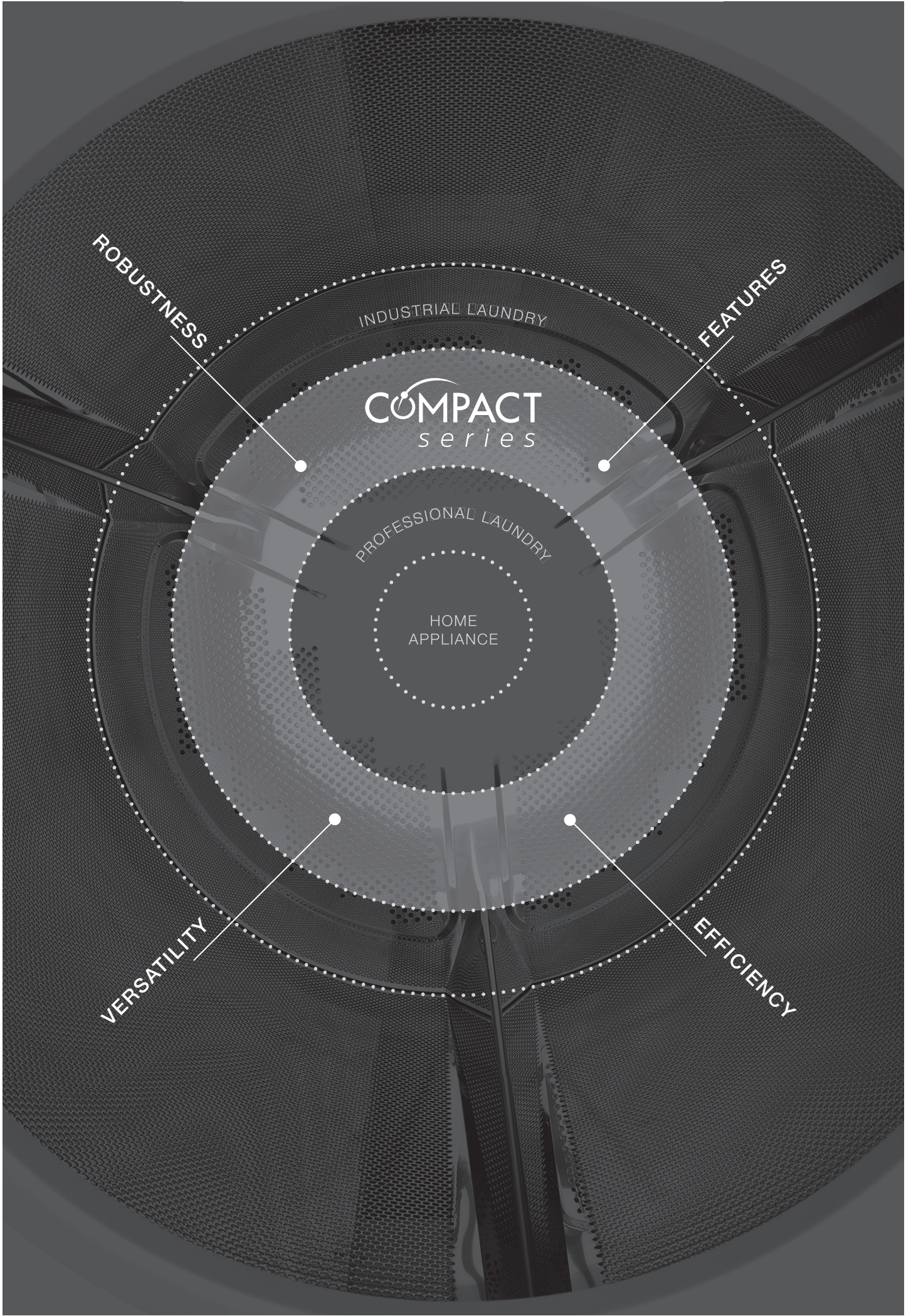
At Fagor Industrial we offer the best answer to your every need.  
And we know how to adapt to the new demands that arise in the market.

This is how Compact was born, a new range of professional laundry products specifically designed for small installations (hairdressers, gyms, campsites, etc.) that require the same features and robustness as industrial laundry machines, but with greater versatility and a more compact size.

It is the concentrated washing power of Fagor Industrial.







ROBUSTNESS

INDUSTRIAL LAUNDRY

FEATURES

COMPACT  
series

PROFESSIONAL LAUNDRY

HOME  
APPLIANCE

VERSATILITY

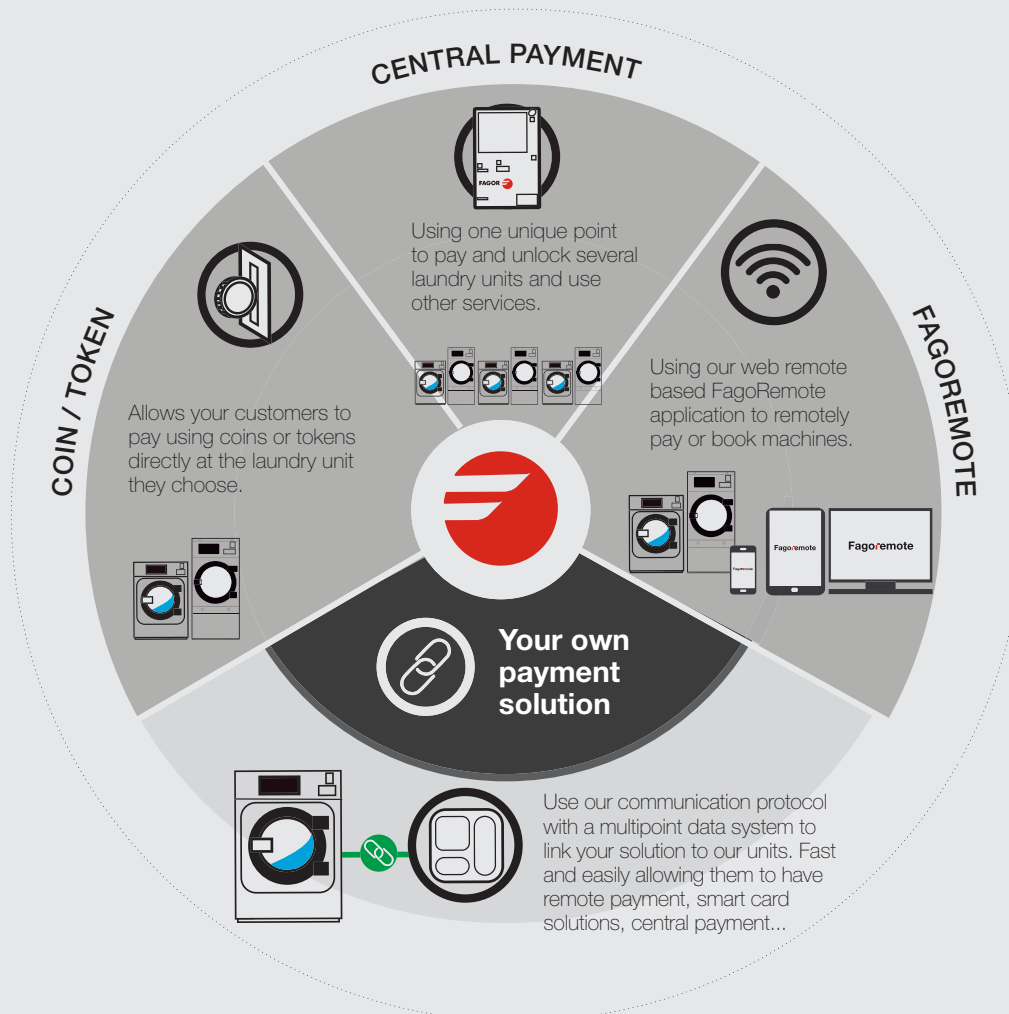
EFFICIENCY



# PAYMENT SOLUTIONS

We can provide you with different payment solutions for our industrial laundry machines.

Choose the one that fits best to your business  
or **combine them all in one.**







# FAGOREMOTE

01.

## IoT SOLUTION

**Fagoreremote** is our new Connected Laundry IoT (Internet of Things) solution. A cloud based multiplatform and responsive application that allows you to manage your laundry from your pocket. No matter how many machines you own, this solution offers you several convenient possibilities.

02.

## REMOTE DEVICE MANAGEMENT

Thanks to this solution, you can organize your connected devices as you wish. Get full status of the machines monitoring if machines are in stand-by, running, offline, booked or showing some error. You can also see the location of the different devices with a user friendly geo-map view.

On the other hand, you just need to choose a machine and fully get connected so that you can:

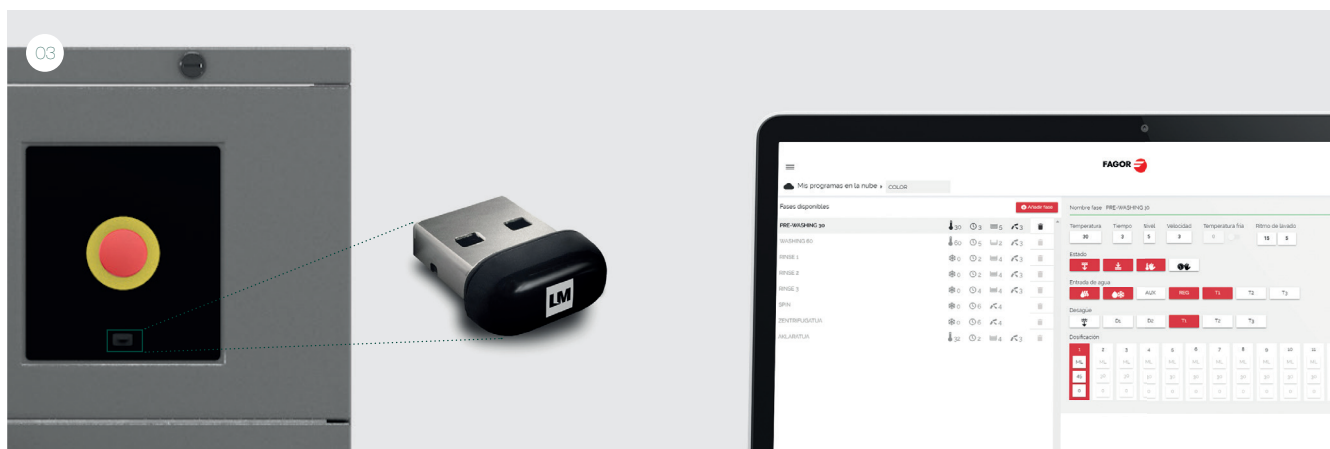
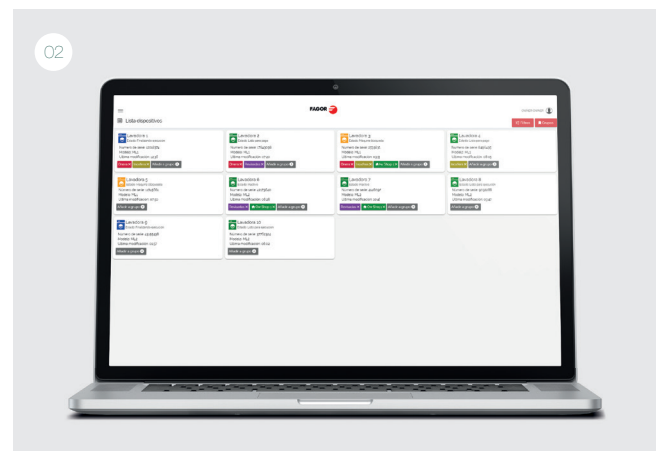
- See real time program parameters.
- Remote desktop.
- Exchange information with r-Washing & r-Drying (programs, price plans, RABC, statistics...)
- Update Software.

03.

## r-WASHING & r-DRYING

Fagor thinks about your comfort. For this reason, the IoT solutions allows to transfer and manage laundry programs and price plans, from your preferred device. You can also see machine error warnings, management of RABC and statistics, which are especially important for safety reasons.

However, if wireless communication is not possible, all these features can be easily transferred through the USB port, which comes as standard in all models.



04.

## MANAGE YOUR LAUNDRY BUSINESS

Thanks to **Fagoremove**, you can create your own shops, as many as you need to manage correctly your business. You can also create discount programs for your costumers.

05.

## DASHBOARD

Monitorize your business at a glance:

- Income per machine
- Program usage.
- Machine occupancy.
- Machine geo-localization.
- Error analytics.

06.

## END USER

Users can also benefit from the advantages of Fagoremove, and can book and pay cashless, remotely, by scanning the QR code.

Moreover, the system notifies them when their clothes are ready.







# DESIGN YOUR LAUNDRY2GO.

---



# LAUNDRY2GO

## DESIGN YOUR MODULE

Choose the configuration options that best meet your needs.

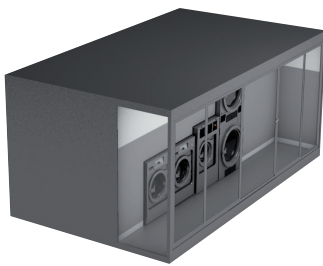
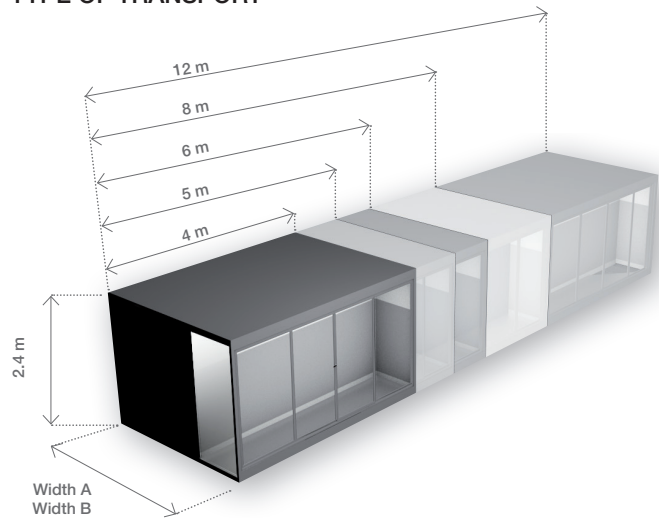
### DIMENSIONS / TYPE OF TRANSPORT



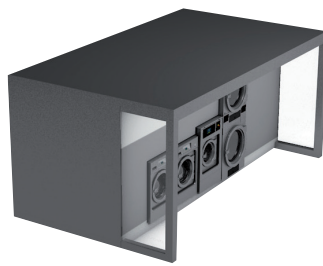
**Maritime transport**  
Width A: 2.35 m



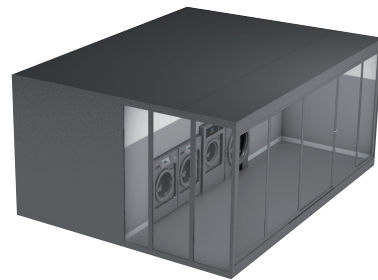
**Land transport**  
Width B: 3 m  
(more usual)



CLOSED



OPEN



DOUBLE

### BUILD CERTIFICATE AND EEC CERTIFICATES

Metal structure manufactured according to Regulation (EU) No 305/2011 of the European Parliament and of the Council of 9 March 2011 laying down harmonised conditions for the marketing of construction products, for the Control of Production in Factory of Metal Structures for the EC Market, and the scope of which is the Design, manufacture and assembly of metal construction and structures. Follow-up and inspection is carried out by the certification body TÜV Rheinland; granting the Control of Production in Factory (CPF) conformity certificate, based on regulation UNE-EN 1090:2011+A1 Execution of steel structures and aluminium structures.

**Part 1:** Requirements for the assessment of conformity of structural components.

**Part 2:** Technical requirements for the execution of steel structures. EXC-3 2+



## DESIGN THE INTERIOR

The standard module has been designed to be very bright, with a front façade that allows the elegance of its interior to be seen.



### WASHERS



8 / 10 Kg

PROFESSIONAL WASHERS



11 / 14 / 18 / 25 Kg

HIGH SPEED WASHERS



11 / 14 / 18 / 25 Kg

MEDIUM SPEED WASHERS  
LOW SPEED WASHERS

### DRYERS



8 / 10 Kg

PROFESSIONAL DRYERS



11 / 16 / 23 / 28 Kg

ADVANCE DRYERS



11 / 16 Kg

DOUBLE STACKING DRYERS



11 / 16 / 23 Kg

HEAT PUMP DRYERS

### ADDITIONAL PERSONALISATION OPTIONS

There are other options available to complete the personalisation of your module, such as the colour of the structure, accessories, etc.

#### - HEATING SYSTEM OF THE WATER

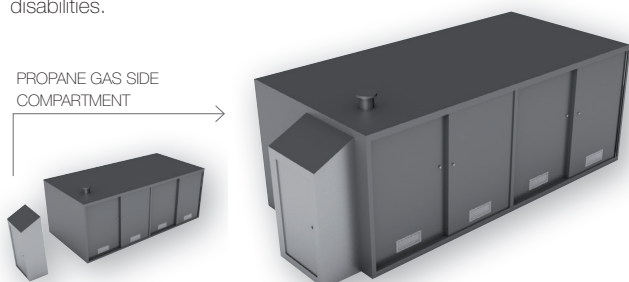
(electric, natural gas or propane gas).

#### - Propane gas side compartment

- Air conditioning.
- Double panel door.
- Access ramp for people with disabilities.

- Extra grills for domotic ventilation.
- Stainless steel structure.

PROPANE GAS SIDE  
COMPARTMENT



### AUXILIARY MACHINES



 PAY STATIONS

 COIN PAYMENT KIT

 IOT CONNECTION KIT





FAGOR INDUSTRIAL S. COOP.  
Santxolopetegi auzoa, 22  
20560 Oñati, Gipuzkoa (España)  
T. (+34) 943 71 80 30  
F. (+34) 943 71 81 81  
info@fagorindustrial.com

www.fagorindustrial.com



ISO 9001



ONNERA GROUP

12158737-2019-1